

West Lancashire
Domestic Violence Strategy
2007

2011 Refresh



Contents

Foreword.....	3
Introduction	4
A Definition	5
What do we know about Domestic Violence...national snapshot	5
What do we know about Domestic Violence...in West Lancashire in 2009/2010	6
Key Partners	6
What has been achieved since the original strategy in 2007?	7
Aims of the Strategy.....	7
Objectives - What we are going to do?	8
Key Priority Areas – What do we want to achieve in West Lancashire?	9
1. Information	9
2. Prevention	10
3. Protection	11
4. Support.....	12
Framework for consultation and delivery	14
Reporting and Accountability Structure.....	14
Forum and Partnership Membership	15
Appendix 1	16

Foreword

Dear Colleagues,

We are pleased to introduce the first 'Refresh' of the West Lancashire Domestic Violence Strategy. This Strategy represents a strong and ongoing commitment from all partner agencies to address the issues that domestic violence presents for our communities.

We have updated our achievements to date, but more importantly have identified the further actions we need to take locally to reduce this significant problem in society. We have more closely aligned our key priorities with those set nationally while also outlining the services that exist locally and the largely insecure nature of the funding for services that many of those affected by domestic violence value the most.

Domestic violence covers a range of behaviours and offences ranging from common assault to rape and murder, as well as on-going emotional, financial and psychological abuse, all of which have a massive effect on victim/survivors, their children and the wider community of West Lancashire.

The challenge for West Lancashire is to use the experience, and determination that already exists within the district to reduce the tolerance of domestic violence with sustained messages across all community and social groups in West Lancashire that domestic violence is unacceptable; to work together to make abusers accountable; and to provide continued and new services that will support those experiencing and witnessing domestic violence.

As West Lancashire Community Safety Partners, we have a duty to work together to tackle domestic violence, provide positive support and bring perpetrators to justice. This Strategy demonstrates the common aims and resolve of the partners and agencies in West Lancashire to make a difference to communities and specifically those affected by domestic violence within our Borough.

I hope you find the strategy informative. Domestic violence is a challenge for us all – help and support from all sectors and communities in meeting this challenge is very much welcomed by the Community Safety Partnership.



Dave Tilleray
Chair, West Lancashire Community Safety Partnership

Introduction

The first West Lancashire Domestic Violence Strategy was developed and published in 2007, since then there has been a great deal done to respond to the impact of domestic violence in West Lancashire.

Domestic violence is deeply embedded in our culture and is one of the most prevalent and damaging crimes. 45% of women and 26% of men had experienced at least one incident of interpersonal violence in their lifetimes (Walby and Allen, 2004) – however, when there were more than four incidents (i.e. ongoing domestic or sexual abuse) 89% of victims were women. It is also the least likely violent crime to be reported with only one third of incidents resulting in injury reported to the police (British Crime Survey 2001/2002). Domestic abuse encompasses many other types of abuse as well as physical injury and many of these are difficult to quantify in terms of harm and occurrence.

Lancashire Constabulary received 1140 reports of incidents of domestic violence in West Lancashire in 2009/2010, compared with 1013 in 2008/2009. Research demonstrates that domestic violence is a very under reported crime and this figure does not reflect the true extent of domestic abuse in our borough. Domestic violence is a complex problem demanding responses from a wide range of services.

Although there is a strong link between domestic violence and substance and alcohol misuse, it is not a causal link; the misuse of power and control within a relationship continues to be key to domestic violence, especially where the victim/survivor is a woman and the abuser is a male partner/ex-partner. Although the connection between domestic abuse and alcohol consumption remains somewhat contentious, there is a notable shift and growing recognition that alcohol is not a direct cause of domestic violence (Jabobs 1998, Hutchison 2000, Humphreys et al 2003, Gonzalez 2006, Gelles et al 2005). Violence does appear to be more frequent and more severe when the abuser misuses drugs or alcohol and substance misuse is one factor identified as increasing the risk of domestic violence fatalities (Dobash and Dobash 2003).

It has been estimated that the cost of domestic violence is nearly £440 per person per year ('The Cost of Domestic Violence', Sylvia Walby, University of Leeds, 2004); this is based on the cost being shared equally among the population and includes costs for the state, employers and those who are subject to domestic abuse. The Lancashire Domestic Violence Strategy 2007 – 2012 estimated the cost in West Lancashire at £47,456,960.

Although statistically women are more likely to be subject to domestic violence, it is important to recognize that domestic violence cuts across all social, ethnic, religious and economic groups and includes people who are gay, lesbian, bisexual and transgendered who may confront additional factors when disclosing domestic abuse.

We are now facing an extremely difficult financial climate, and although there are likely to be some very hard decisions to make we must not lose sight of the fact that domestic violence continues to be a substantial threat to families, the cohesiveness of communities and future outcomes for victims and children, with children often being the hidden victims.

A Definition

The government/home office definition of domestic violence is:

"Any incident of threatening behaviour, violence or abuse (psychological, physical, sexual, financial or emotional) between adults who are or have been intimate partners or family members, regardless of gender or sexuality."

The inclusion of family members in the above definition enables the recognition of issues of major concern to black and minority ethnic communities such as forced marriage, so called 'honour crimes' and female genital mutilation.

Domestic violence exists in all social classes, racial, ethnic, and cultural groups and can be experienced at any age and irrespective of factors such as sexuality and disability.

What do we know about Domestic Violence...national snapshot

- Every week in England and Wales two women are killed by their current or former partner
(British Crime Survey 1998 and 2002)
- Domestic violence has been identified as a prime cause of miscarriage or stillbirth (1), and of maternal deaths during childbirth (2)
1 Mezey, Gillian (1997) "Domestic Violence in Pregnancy" in Bewley, S., Friend, J., and Mezey, G.: (1997) (ed.) Violence against women (Royal College of Obstetricians and Gynaecologists)
2 Lewis, Gwynneth, Drife, James, et al. (2001) Why mothers die: Report from the confidential enquiries into maternal deaths in the UK 1997-9; commissioned by Department of Health from RCOG and NICE (London: RCOG Press); also Why Mothers Die 2000-2002 - Report on confidential enquiries into maternal deaths in the United Kingdom (CEMACH)
- A survey of 1000 women in city centres in Northern England found that 1 in 8 women reported having been raped by their husbands or partners
(Painter, K. (1991) Wife Rape and The Law Survey Report)
- On average, two women in England and Wales are killed by a violent partner or ex-partner. This constitutes nearly 40% of all female homicide victims.
(Povey, D. (2005) Crime in England and Wales 2003/2004: Supplementary Volume 1: Homicide and Gun Crime. Home Office Statistical Bulletin No. 02/05. Home Office. London; Department of Health (2005) Responding to Domestic Abuse. DH. London)
- 8% of male homicide victims are killed by a violent partner or ex partner
(Criminal Statistics (1992) Home Office)
- Domestic violence is the least likely violent crime to be reported to the police.
Only 21% of women report the violence they experience to the police
(McVeigh et al, 2005)
- The level of domestic abuse in the population exceeds that of diabetes by many times
(Department of Health 2010)
- Where there is domestic violence, children witness about 3/4 of the abusive incidents.
About 1/2 the children in such families have themselves been badly hit or beaten
(Royal College of Psychiatrists 2004)
- At least 1 in 4 women in the UK will experience domestic abuse in their lifetime
(British Crime Survey 2009/2010)
- It's been estimated that 6% of men experience domestic abuse in their lifetime, and 1.5% in any year
(Scottish Executive CRU 2002)

What do we know about Domestic Violence...in West Lancashire in 2009/2010

- 1140 incidents reported to police
(Lancashire Constabulary)
- West Lancashire Domestic Violence Support Services received 3314 calls
(West Lancashire DV Support Services)
- 488 referrals were received by West Lancashire DV Support Services, of which 122 were children who were referred with their parent to the refuge
(West Lancashire DV Support Services)
- 104 referrals to the West Lancashire Independent Domestic Violence Support Adviser (IDVA)
(West Lancashire DV Support Services)
- 118 referrals to the West Lancashire Multi Agency Risk Assessment Conference (MARAC)
- Of the domestic incidents that were recorded as crimes Lancashire Constabulary recorded that 73% of victims were female, 17% male (however data is not available in 10% of incidents)
(Lancashire Constabulary)
- Men identified as victims constituted 5% of the victims referred to MARAC, the majority of high risk victims were identified as female (95%)
- 400 domestic incidents recorded as crimes
(Lancashire Constabulary)
- 3306 – estimate of the number of victims of domestic violence aged between 16-59 in West Lancs in the last year
(Using Violence Against Women and Girls 'Ready Reckoner')
- 518 criminal cases at court
(Crown Prosecution Service)
- 54 criminal cases unsuccessful because of witness related issues (approx 10% of unsuccessful cases)
(extrapolated from Crown Prosecution Service statistics)
- 67 offender enrolments on probation Domestic Violence Programme
(Lancashire Probation Trust)

Key Partners

West Lancashire Community Safety Partnership
West Lancashire Domestic Violence Forum and West Lancs MARAC representatives group
West Lancashire Women's Refuge Ltd (trading as West Lancashire Domestic Violence Support Services)
Lancashire Constabulary
Victim Support
West Lancashire Local Strategic Partnership
Lancashire Domestic Violence Partnership

What has been achieved since the original strategy in 2007?

- Domestic violence continues to be a priority for West Lancashire Community Safety Partnership, and it identified as such in the partnership plan
- Ongoing commitment and effort of West Lancashire Domestic Violence Support Services to provide services, and maintain the profile of the domestic violence agenda
- West Lancashire secured Specialist Domestic Violence Court status, which includes as two of the eleven components the establishment of an Independent Domestic Violence Adviser (IDVA) service and Multi Agency Risk Assessment Conferences (MARACs)
- Establishment of Sanctuary Scheme
- Development & distribution of Domestic Violence Resource Directory
- Domestic violence awareness sessions delivered to communities by West Lancashire DV Support Services
- Provision of the Domestic Violence Recovery Programme by West Lancashire DV Support Services
- Provision of information to young people regarding healthy relationships at student and freshers fairs and through other events
- Alcohol/substance misuse workers across South West Lancashire participated in domestic violence training sessions
- Awareness campaigns at significant times e.g. Christmas/New Year plus World Cup 2010
- Domestic violence training highlighting MARACs and referral procedures to MARACs, including multi-agency training, has been provided in the borough along with other briefings delivered by Domestic Violence Co-ordinator
- Provision of therapeutic groupwork programme for children and their non-abusing parent/carer
- Updating of domestic violence information in migrant working welcome pack
- Joint project between West Lancashire Domestic Violence Support Services, West Lancashire Council for Voluntary Service and Young Carers and the Birchwood Centre to establish Positive Prevention Project (support project for 0-19 year olds) funded by West Lancashire Children's Trust. This is was a time limited pilot project and is due to end in March 2011 but the learning will be incorporated into the trust's Early Intervention strategy.
- Domestic Violence Support Services and West Lancashire Council for Voluntary Service have facilitated Domestic Violence workshops with students across Lancashire to improve awareness from students moving into health and social work careers.

Aims of the Strategy

- To increase awareness of domestic violence in West Lancashire thereby increased reporting of domestic violence in the borough
- To work together towards challenging abusive behaviours and preventing domestic violence
- To develop an action plan and strategic approach to domestic violence that will be effective in supporting families and reducing domestic violence in the district

- To work in partnership with public, voluntary community, faith sector plus the private sector agencies, organisations and businesses in the Borough to deliver better services and outcomes for families
- To recognise the wide degree of social impact, determinants and causes of domestic violence to ensure there is a community wide focus on increasing awareness, reporting and cultural challenging of the acceptance of domestic violence via all partners of the Community Safety Partnership but particularly the voluntary community and faith sectors, schools and colleges.

Objectives - What we are going to do?

- Develop and agree a refreshed domestic violence strategy for West Lancashire
- Work together in partnership to meet the needs of families in the district using the strategy as a template and measure of progress
- Through robust multi-agency partnerships and monitoring, work towards a balanced provision of information, prevention, protection and support

Key Priority Areas – What do we want to achieve in West Lancashire?

1. Information

Domestic violence is under reported in West Lancashire

Objective	Provision	Lead/s
Continue to raise awareness by devising, promoting and supporting campaigns whether local, regional or national	Targeted awareness campaigns at significant times DV Awareness sessions(s) delivered to communities	Multi-agency DV groups and forums Community Safety Partnership West Lancashire DV Co-ordinator West Lancashire DV Support Services Lancashire DV Partnership
Work with the press to promote information and activity that is taking place	Press releases have been used to raise awareness	Community Safety Partnership Multi-agency DV groups and forums
Use of agency newsletters etc to communities/service users	Information to be routinely included in newsletters wherever possible	Community Safety Partnership Multi-agency DV groups and forums Voluntary and faith sectors
Providing or signposting people to information on other languages and formats wherever possible	Internet resources Other formats including audio CDs	All agencies
Provision of information to agencies and professionals	Domestic Violence Resource Directory Multi agency training and other briefing sessions DV service literature being made available Use of the covert helpline items	All agencies
Technology and the internet	Better use of resources such as Facebook, Twitter and text messages. Monitoring of hits to websites	Key CSP partners

2. Prevention

Preventative services and procedures can improve the safety and quality of life for families in the borough

Objective	Provision	Lead/s
Secure funding (wherever possible) to deliver preventative interventions	Availability of preventative measures, especially appropriate groupwork and recovery programmes	West Lancashire CSP West Lancashire DV Support Services
Engagement of young people regarding domestic violence	Engagement of educational establishments, youth centres, social and uniformed groups for young people	West Lancashire CSP Young Peoples Services Lancashire County Council Children's Trust
Support county, regional or national campaigns		West Lancashire CSP West Lancashire DV Co-ordinator Lancashire DV Partnership Children's Trust
Perpetrator programmes	Ideally a local voluntary perpetrator programme would be preferred and locally we can investigate whether it would be feasible to secure funding for one. In the interim, details of RESPECT accredited helplines and programmes wherever they are should be made as widely available as possible	West Lancashire CSP Lancashire Constabulary

3. Protection

Victims and children affected by domestic violence are some of the most vulnerable people in our communities

Objective	Provision	Lead/s
To tackle domestic violence effectively we need to work in partnership with each other	Increase referrals from agencies other than the police and IDVA to MARAC	All agencies West Lancashire CSP MARAC Reps
First response to reported incidents	The police have made huge steps in their responses to domestic violence and responses are much more robust now than historically. Ensuring that risk assessments are completed and that victims are told about voluntary sector support services continues to be vital.	Lancashire Constabulary
Appropriate information sharing	Address information sharing issues in relation to low/medium risk victims	Lancashire Constabulary West Lancashire DV Support Services Victim Support
Secure funding for activities relating to the protection of victims and children	An example of this type of activity is the Sanctuary Scheme and IDVA.	West Lancashire CSP West Lancashire Borough Council West Lancashire DV Support Services
Criminal Justice System	Much work and progress and been made to increase victims confidence in the Criminal Justice System. This work needs to continue	Specialist Domestic Violence Court management arrangements Criminal Justice Board Victim Support Lancashire DV Partnership

4. Support

A range of support services and interventions are needed to meet the complex and varied needs of those affected by domestic violence.

The services most valued by victim/survivors are often (but not necessarily exclusively) the services who sit within the voluntary sector and who struggle for sustained funding the most

Objective	Provision	Lead/s
Identify and secure funding to deliver support services/projects that have been identified as meeting the needs of victims or where gaps in service provision exist	Ongoing monitoring and evaluation of the services that exist now and identification of any gaps that exist	West Lancashire CSP West Lancashire DV Support Services Victim Support Lancashire DV Partnership
Effective partnership working between statutory and other voluntary and faith sector agencies with specialist support services	Partnership working does take place, ensuring consistency is key to better outcomes for those affected by DV	West Lancashire CSP West Lancashire DV Support Services West Lancashire CVS
Engagement with and meeting the needs of West Lancashire's diverse communities and those who are at risk of exclusion e.g. migrant workers, lesbian, gay, bisexual, transgendered, black and ethnic minority groups.	<p>Victims who have 'no recourse' to public funds present to services in West Lancashire rarely, however, when this situation does arise it causes substantial issues for the individuals and for agencies trying to protect and support victims.</p> <p>Locally we should raise the profile of such circumstances between the relevant agencies when they arise and monitor the frequency and impact.</p> <p>With information about frequency and impact we can assess what the needs are and address them either locally or by linking to regional or national initiatives</p>	West Lancashire CSP West Lancashire DV Support Services Lancashire Supporting People Lancashire DV Partnership
Adoption of domestic violence policies by agencies and businesses	Provide support and signposting to agencies and businesses and actively encourage them to adopt DV policies to bring a better response to those affected by domestic violence	West Lancashire DV Co-ordinator

<p>Victims of domestic violence who have physical and/or learning disability</p>	<p>Ensure provision of information to this potentially particularly vulnerable group Discuss methods of statistical monitoring for the purposes of identifying any gaps in provision</p>	<p>Vulnerable Adults Carers Centre Supporting People</p>
<p>Forced Marriage and Female Genital Mutilation</p>	<p>As far as we are aware these issues do not present frequently in the borough. There is still a need to ensure that information is made available and that professionals and public can access information about what to do and who to talk to. Monitoring of any cases that we do become aware of for the purposes of identifying gaps in services</p>	<p>West Lancashire CSP West Lancashire DV Support Services West Lancashire DV Co-ordinator Lancashire DV Partnership</p>
<p>Sexual assault and sexual abuse</p>	<p>There is no current funding for a local specialist service, there is some provision but it is limited. Increasing reporting and capturing statistical information are key to consolidating current provision and extending it should the need be proved.</p>	<p>West Lancashire CSP West Lancashire DV Support Services West Lancashire DV Co-ordinator Lancashire Constabulary</p>

Framework for consultation and delivery

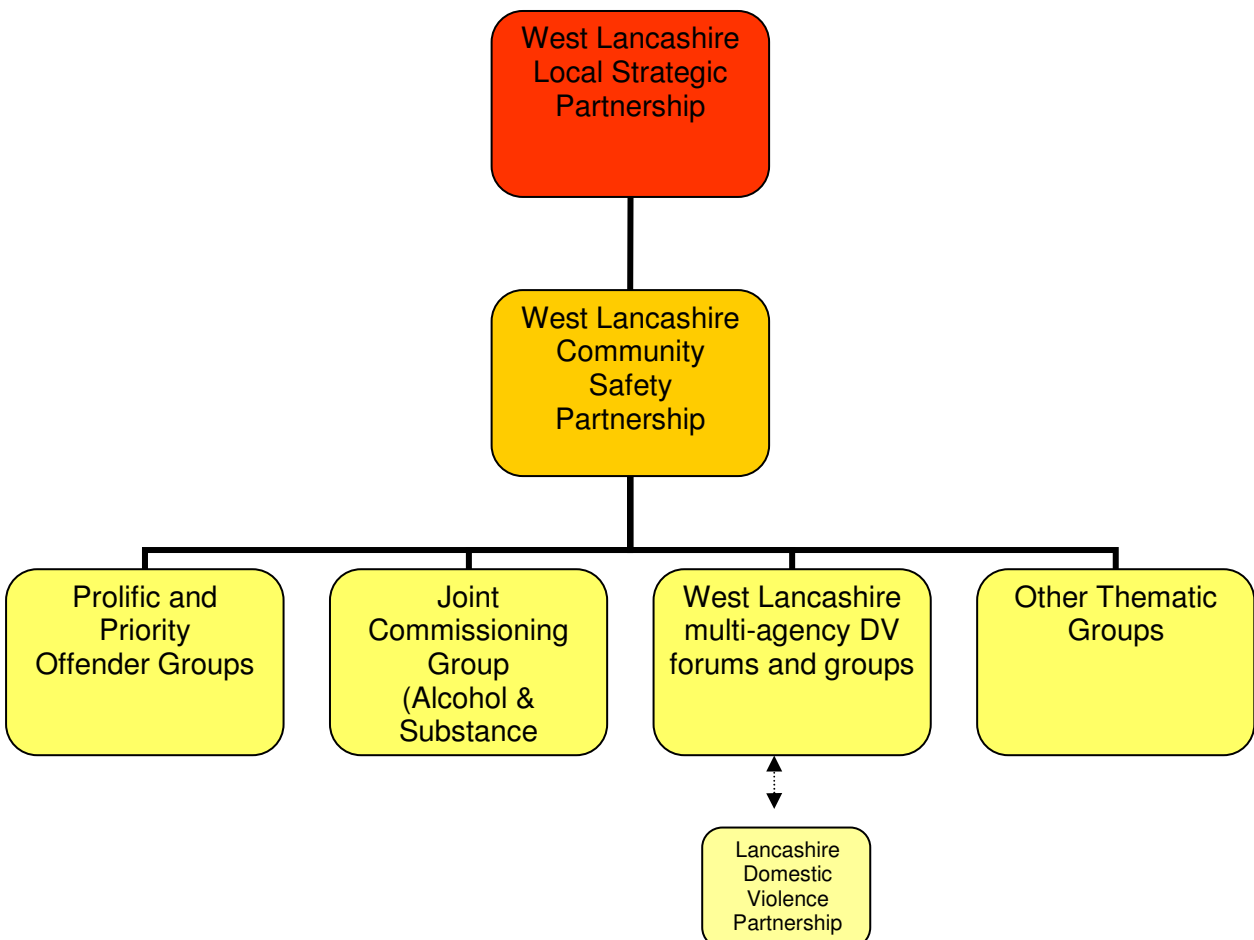
Consultation

- The draft refreshed strategy was drawn up and consulted on widely across West Lancashire, and with specific regional and national organisations and groups
- West Lancashire Borough Council complies with the Equality Act 2010 and our responsibilities in relation to Equality Impact (Initial) Assessment have been met
- The document was revised and edited following the consultation period

Delivery

- The West Lancashire Domestic Violence Co-ordinator post is key to monitoring and facilitating the delivery of the West Lancashire Domestic Violence Strategy
- It is intended that appropriate action plans, will be drawn up in conjunction with partner agencies to address the priorities that have been identified and that the strategy will be reviewed and refreshed at least every three years through the current multi-agency groups, forums and the Community Safety Partnership

Reporting and Accountability Structure



Forum and Partnership Membership

West Lancashire Local Strategic Partnership

Lancashire County Council West Lancashire Borough Council Parish Council Representatives Lancashire Constabulary Lancashire Fire and Rescue NHS Central Lancashire (PCT) Southport and Ormskirk Hospital NHS Trust Members of Parliament for West Lancashire and South Ribble Environment Agency Natural England Local Schools (1 primary, 2 secondary) Edge Hill University Skelmersdale and Ormskirk College North West Development Agency Government Office North West NHS North West (Strategic Health Authority) Job Centre Plus	Homes and Communities Agency Central Lancashire Adult mental health Development Group Physical Disability Partnership Board Learning Disability Partnership Board LGTB West Lancashire Council for Voluntary Service Campaign to Protect Rural England Groundwork Wildlife Trust Ormskirk, Preston, Southport Travellers Association The Prince's Trust Transport and General Workers Union National Farmers Union SW Lancashire Trade Union Congress	Students' Union – Edge Hill Birchwood Centre Age Concern Faith network SSCF Neighbourhood Board Ormskirk Community Partnership West Lancashire DV Support Services Chamber of Commerce Registered Social Landlord Representative Co-operative Bank Intraining Group Karl Vella Group Advertiser Newsgroup Business Link Concourse Shopping Centre Arriva Proctor and Gamble Morgan Training Services Ltd A4e Connect to Work Bickerstaffe Children's Services
--	--	--

West Lancashire Community Safety Partnership

Lancashire Constabulary Help Direct Lancashire County Council Lancashire Police Authority Edge Hill University Crown Prosecution Service West Lancashire Borough Council Youth Offending Team Local councillor	Lancashire Probation Trust Young Peoples Service West Lancashire CVS Victim Support West Lancashire Domestic Violence Support Services Greater Manchester West (providing alcohol and substance misuse services)	Group Intervention Project Lancashire County Council British Waterways Arriva North West Magistrate Lancashire Fire and Rescue Service Trading Standards
--	---	--

Multi-agency Domestic Violence Forum & MARAC Representatives Group

Domestic Violence Forum

Central Lancashire Primary Care Trust Children's Centres Greater Manchester West (providing alcohol and substance misuse services) Consultant Midwife, Southport & Ormskirk District General Hospital Crown Prosecution Service	Faith groups HomeStart Lancashire County Council Physical Disability Partnership Board Magistrates Lancashire Constabulary Children's Social Care DISC West Lancashire Borough Council	Probation Service Skelmersdale and Ormskirk College West Lancashire Council for Voluntary Service West Lancashire Domestic Violence Support Services Mencap West Lancashire Skelmersdale Community Food Initiative
---	--	---

MARAC Representatives Group

Central Lancashire Primary Care Trust Children's Centres Children's Social Care Greater Manchester West (providing alcohol and substance misuse services) Lancashire Care – Criminal Justice Liaison	Lancashire Constabulary Homelessness Prevention Team Multi Agency Problem Solving (MAPS) Team Independent Domestic Violence Adviser Consultant Midwife, Southport & Ormskirk District General Hospital	Probation Service West Lancashire Domestic Violence Support Services CAFCASS Lancashire Fire and Rescue DISC (tenancy related support) Safeguarding Nurse, Safeguarding/Protecting Children and Young People, NHS Central Lancashire
--	--	--

Appendix 1

Funding position of current domestic violence provisions

Service/project	Partner Agencies	Current funding	Funding position/ end date
Awareness campaigns	Miscellaneous funding committed as required from Community Safety Partnership		
Children's Workers	West Lancashire Domestic Violence Support Services	Gateway funding-two part-time posts John Moores funding-one separate part time post	June 2011 March 2012
Domestic Violence Co-ordinator	West Lancashire Borough Council	West Lancashire Borough Council Primary Care Trust West Lancashire Community Safety Partnership	June 2011 Waiting confirmation of position from July 2011 to end March 2012
Domestic Violence Helpline	West Lancashire Domestic Violence Support Services	No funding currently in place	
Domestic Violence Information Centre	West Lancashire Domestic Violence Support Services	Nationwide (small grant) LINK (small grant) The two grants above constitute part funding for the Information Centre	March 2012
Domestic Violence Recovery Programme	Delivered by West Lancashire DV Support Services	LDAAT	April 2011
Emergency temporary accommodation Floating Support	West Lancashire Domestic Violence Support Services	Supporting People	Funding subject to cuts
Independent Domestic Violence Adviser (IDVA)	West Lancashire Domestic Violence Support Services	West Lancashire Local Strategic Partnership Safer Lancashire Board	March 2012
Ladybird Project (Therapeutic groupwork programme for non-abusing victims and their children)	SureStart & West Lancashire Domestic Violence Support Services	SureStart	Christmas 2010
Multi-agency training	Training delivered as required by both West Lancashire DV Co-ordinator and West Lancashire DV Support Services		
Positive Prevention Project	Joint project between: Council for Voluntary Service (CVS) West Lancashire Domestic Violence Support Services Young Carers Birchwood Centre	Lancashire Children's Fund	March 2011
Sanctuary Scheme	West Lancashire Domestic Violence Support Services	Homelessness Prevention Grant	September 2011
Victim Support	Lancashire Constabulary West Lancashire Domestic Violence Services	Victim Support funded to support victims of all crime from the Ministry of Justice	March 2012
West Lancashire Resource Directory	Funding for initial compilation was provided by West Lancashire CSP, however the directory needs updating		



We can provide the West Lancashire
Domestic Violence Strategy and other Council publications
on audiotape, CD, large print, Braille, and in other
languages

as

appropriate on request.

Visit our website

www.westlancs.gov.uk/access

or telephone 01695 577177